

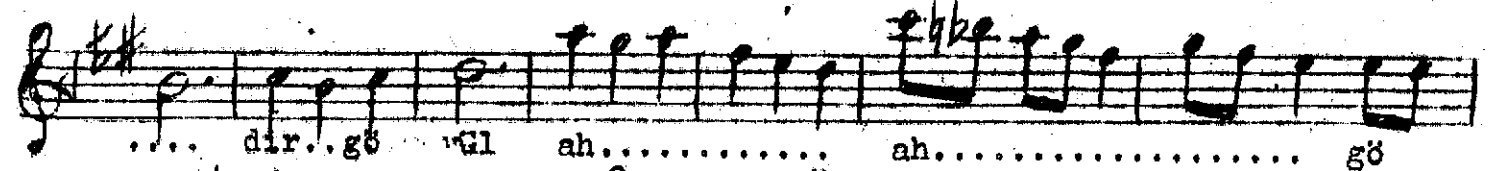
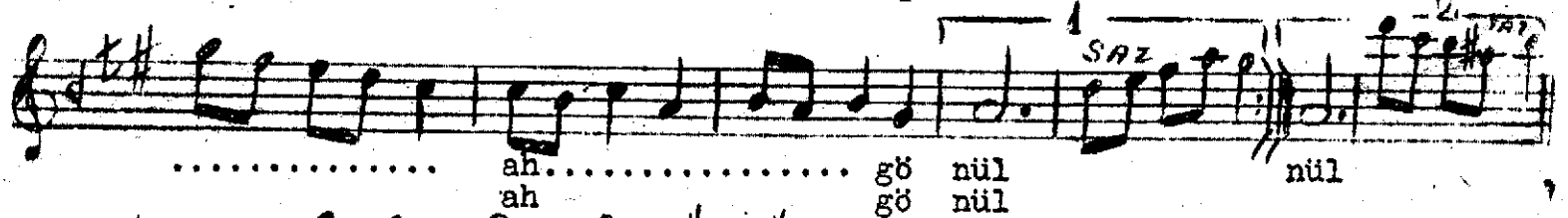
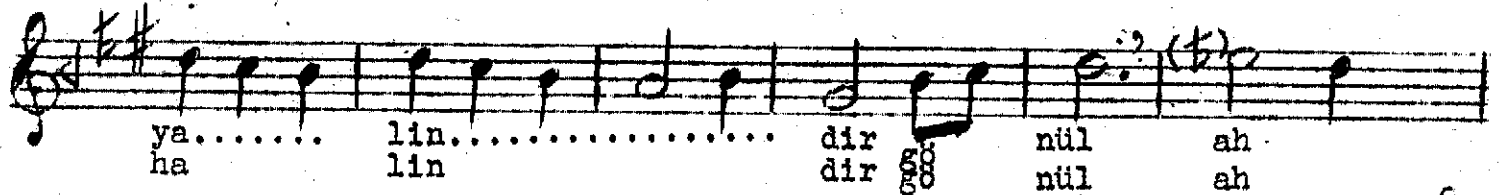
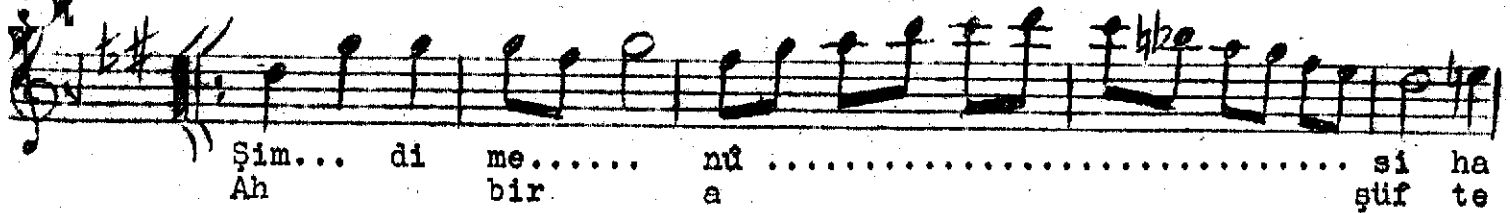
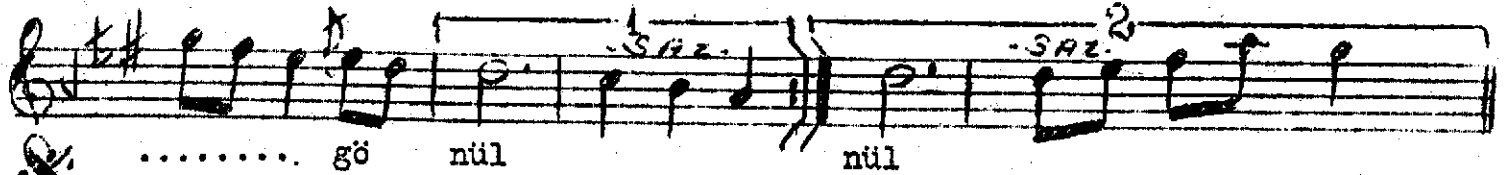
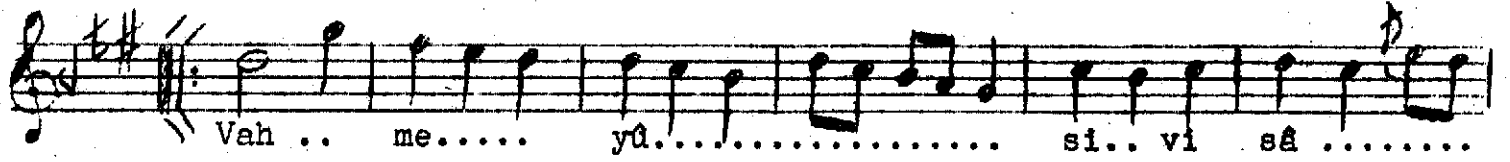
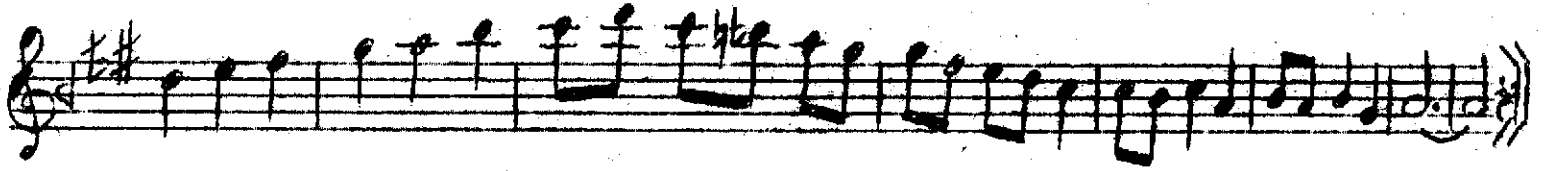
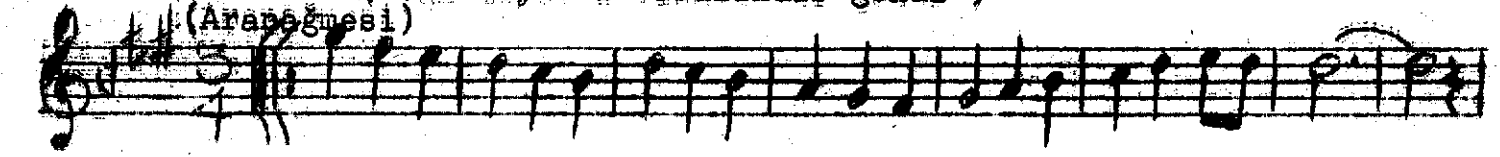
Semâi

KARCI GÂR ŞARKI

Güfte - Beste
Mahmud Celâleddin Paşa

(Vah meyls-i visâlidir gönül)

(Arabağmesi)



nül

nül

Meyus - yeis getirmiş

Menüs - uyutmuş

Mânâ - sevgililerin beraberliği.

Cemal - Güzellik

Asüfte-hal - asüfte. laübâli halli.